

# MINNESOTA DEPARTMENT OF TRANSPORTATION RIGHT OF WAY PLAT No. 31-15

STATE PROJECT NO. 3106 (6=34) 901

IN THE WEST HALF OF SECTION 31, T. 56 N., R. 26 W. AND  
IN THE EAST HALF OF SECTION 36, T. 56 N., R. 27 W.

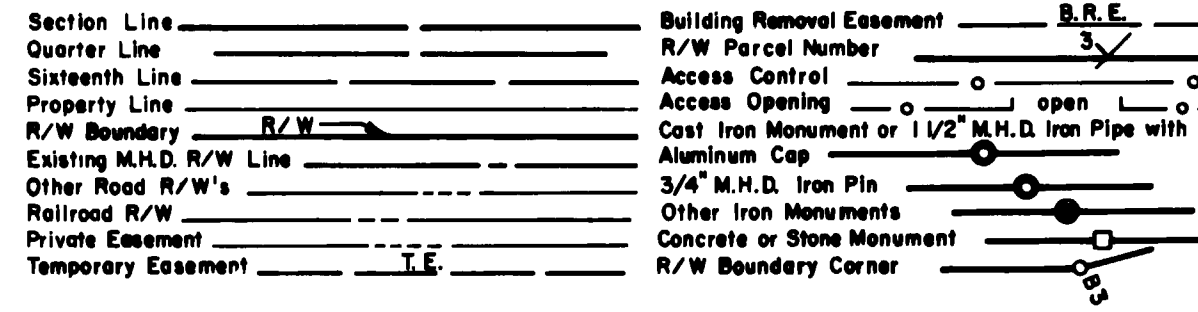
ITASCA COUNTY, MINNESOTA

RIGHT OF WAY IN SECTION 31								
PARCEL	OWNER	LOCATION	TORREN'S CERTIFICATE NO.	NEW	TEMPORARY	BUILDING REMOVAL EASEMENT	EASEMENT EXPIRES ON	PERMANENT R/W INTEREST
				Tk. R/W	EASEMENT			
9	County of Itasca	SW 1/4 SW 1/4		6.38				Fee
10	County of Itasca	NW 1/4 SW 1/4		6.09	1.39		12-1-83	Fee
11	County of Itasca	Gov't Lot 2		8.24	0.57		12-1-83	Fee
12	Bernard Nolette	Gov't Lot 1		2.36				Fee
13	Lowell Ruby	NE 1/4 NW 1/4		0.03				Fee
16	Burlington Northern Ry.	Gov't Lot 1 NE 1/4 NW 1/4		0.46	0.46		12-1-83	Fee
RIGHT OF WAY IN SECTION 36								
14	Francis Berbee	NE 1/4 SE 1/4 SE 1/4 SE 1/4 SE 1/4 NE 1/4		0.22				Fee
15	State of Minnesota	NE 1/4 NE 1/4		0.13				Fee

### SURVEY STANDARDS

- The plat values, azimuths and distances, are based on the project control survey system.
- The boundary monuments shown on this plat have been field checked for location. The standard deviation for the monument positions is 0.1 ft.
- The state plane coordinates shown on one monument are based on ties to national control monuments.
- Certificates of Location have been filed at the County Recorder's Office and/or the County Surveyor's Office for the section corner monuments shown on this plat.
- For details of this survey contact the Surveying and Mapping Section at the Minnesota Department of Transportation Breithard  
Name of District \_\_\_\_\_

### CONVENTIONAL SYMBOLS



DISTANCES SHOWN TO FEET (66, 80 ETC.) ARE EXACT EXTRINSIC VALUES.

### AZIMUTH ORIENTATION AND GRID CONVERSION

Plat azimuths are oriented to Minnesota State Plane Coordinate System with 0 degrees 0 minutes 0 seconds being "GRID NORTH".  
Plat distances are ground lengths and can be converted to Minnesota State Plane Grid lengths by multiplying Plat distances by 0.9998926

THE COMMISSIONER OF TRANSPORTATION IS HEREBY DESIGNATING THE DEFINITE LOCATION OF TRUNK HIGHWAY NO. 6 FROM INPLACE TRUNK HIGHWAY NO. 6, 3.5 MILES WEST OF CHASSET, TO TRUNK HIGHWAY NO. 2, 4.0 MILES NORTHWEST OF COHASSET

As shown on this plat prepared by the State of Minnesota Department of Transportation is hereby certified as the official plat of that portion of said T.H. 6 within the designated portion of Sections 31 and 36, and the Commissioner's Order therefor, pursuant to Minnesota Statutes 1969, section 161.16 subd. 2, section 160.14 subd. 1, and section 160.085 and Minnesota Laws of 1976, Chapter 166.

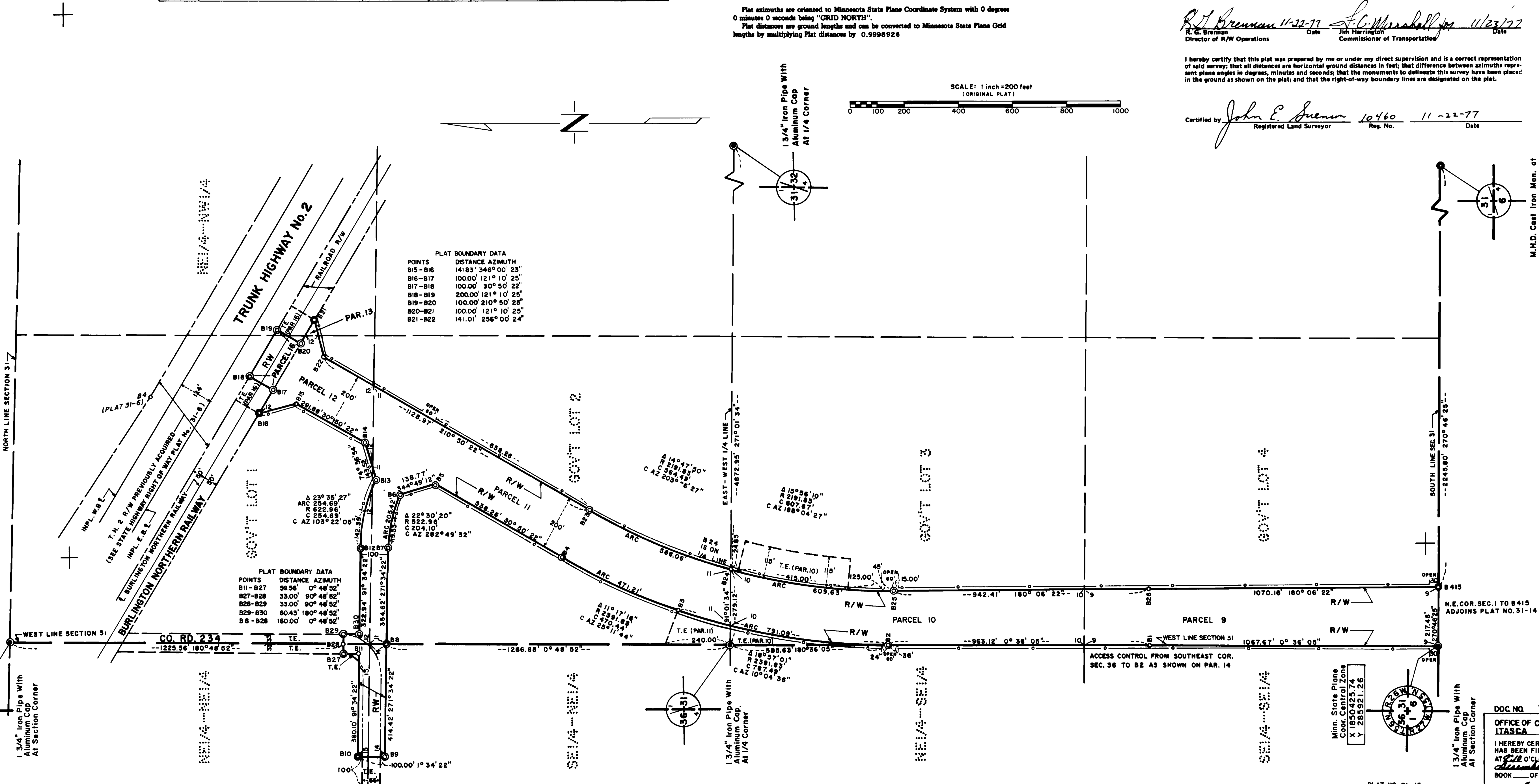
Commissioner's Order No.	Location	Nature of Interest
60155	Plats 31-13 thru 31-15	Definite location, width, access, temporary easement and building removal easement.

Recommended for Certification: R. G. Brennan 11-22-77  
Director of R/W Operations Date

Certified: J. C. Marshall 11/23/77  
Jim Harrington Commissioner of Transportation Date

I hereby certify that this plat was prepared by me or under my direct supervision and is a correct representation of said survey; that all distances are horizontal ground distances in feet; that the monuments to delineate this survey have been placed in the ground as shown on the plat; and that the right-of-way boundary lines are designated on the plat.

Certified by John E. Suenen 10460 11-22-77  
Registered Land Surveyor Reg. No. Date



DOC NO. 311370

OFFICE OF COUNTY RECORDER  
ITASCA COUNTY, MINN.

I HEREBY CERTIFY THAT THIS PLAT HAS BEEN FILED IN THIS OFFICE AT 12 O'CLOCK P.M. ON December 1st, 1977 IN BOOK OF PAGE