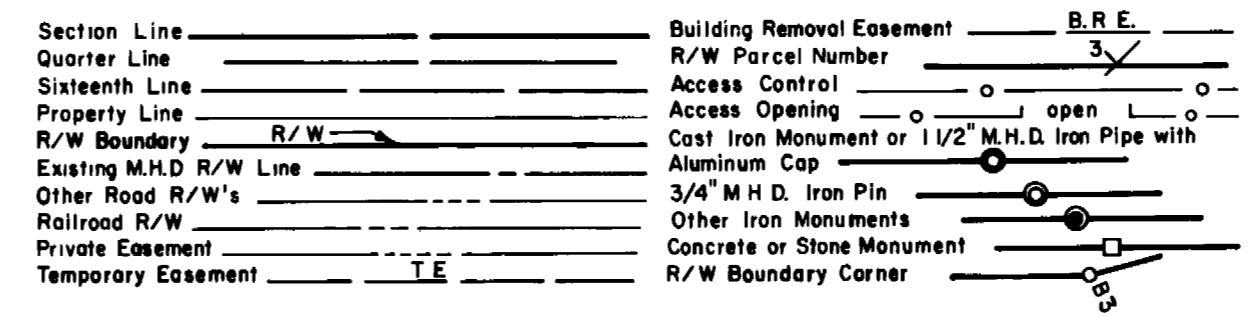


CONVENTIONAL SYMBOLS



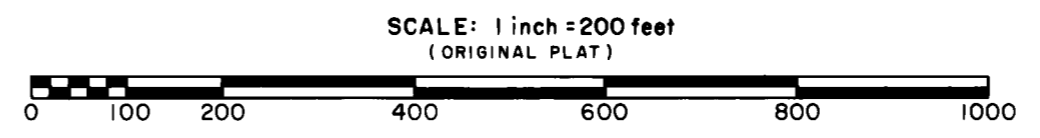
DISTANCES SHOWN TO FEET (66,80 ETC.) ARE EXACT EXTRINSIC VALUES.

AZIMUTH ORIENTATION AND GRID CONVERSION

Plat azimuths are oriented to Minnesota State Plane Coordinate System with 0 degrees 0 minutes 0 seconds being "GRID NORTH".
Plat distances are ground lengths and can be converted to Minnesota State Plane Grid lengths by multiplying Plat distances by 0.9998841

Survey Standards

- The plat values, azimuths and distances, are based on the project control survey system.
- The boundary monuments shown on this plat have been field checked for location. The standard deviation for the monument positions is 0.4 ft.
- The state plane coordinates shown on one monument are based on ties to national control monuments.
- Certificates of Location have been filed at the Register of Deeds' Office and/or the County Surveyor's Office for the section corner monuments shown on this plat.
- For details of this survey contact the Surveying and Mapping Section at the Minnesota Highway Department Duluth Name of District.



PLAT BOUNDARY DATA		
LINE	DISTANCE	AZIMUTH
NW CORNER OF PLAT 31-10 TO B8	33.00'	92° 09' 07"
B8 TO B9	64.45'	182° 09' 07"
B9 TO B10	182.45'	157° 58' 44"
B10 TO B11	36.76'	129° 56' 21"
B11 TO B3	141.83'	129° 56' 21"
SW CORNER OF SEC 30 TO B2	136.77'	91° 41' 51"

STATE HIGHWAY RIGHT OF WAY PLAT NO. 31-10*

STATE PROJECT 3103 (2-8-35)

IN THE SOUTHWEST QUARTER OF SECTION 30, T.56N., R.26W. AND IN SECTION 31, T.56N., R.26W.

ITASCA COUNTY, MINNESOTA

* AMENDMENT TO: STATE HIGHWAY RIGHT OF WAY PLAT 31-6 STATE PROJECT 3103 (2-8-35) PARCELS 201 & 204

THE COMMISSIONER OF HIGHWAYS IS HEREBY DESIGNATING THE DEFINITE LOCATION OF TRUNK HIGHWAY NO. 2 FROM 2.5 MILES TO 3.5 MILES NORTHWEST OF COHASSET

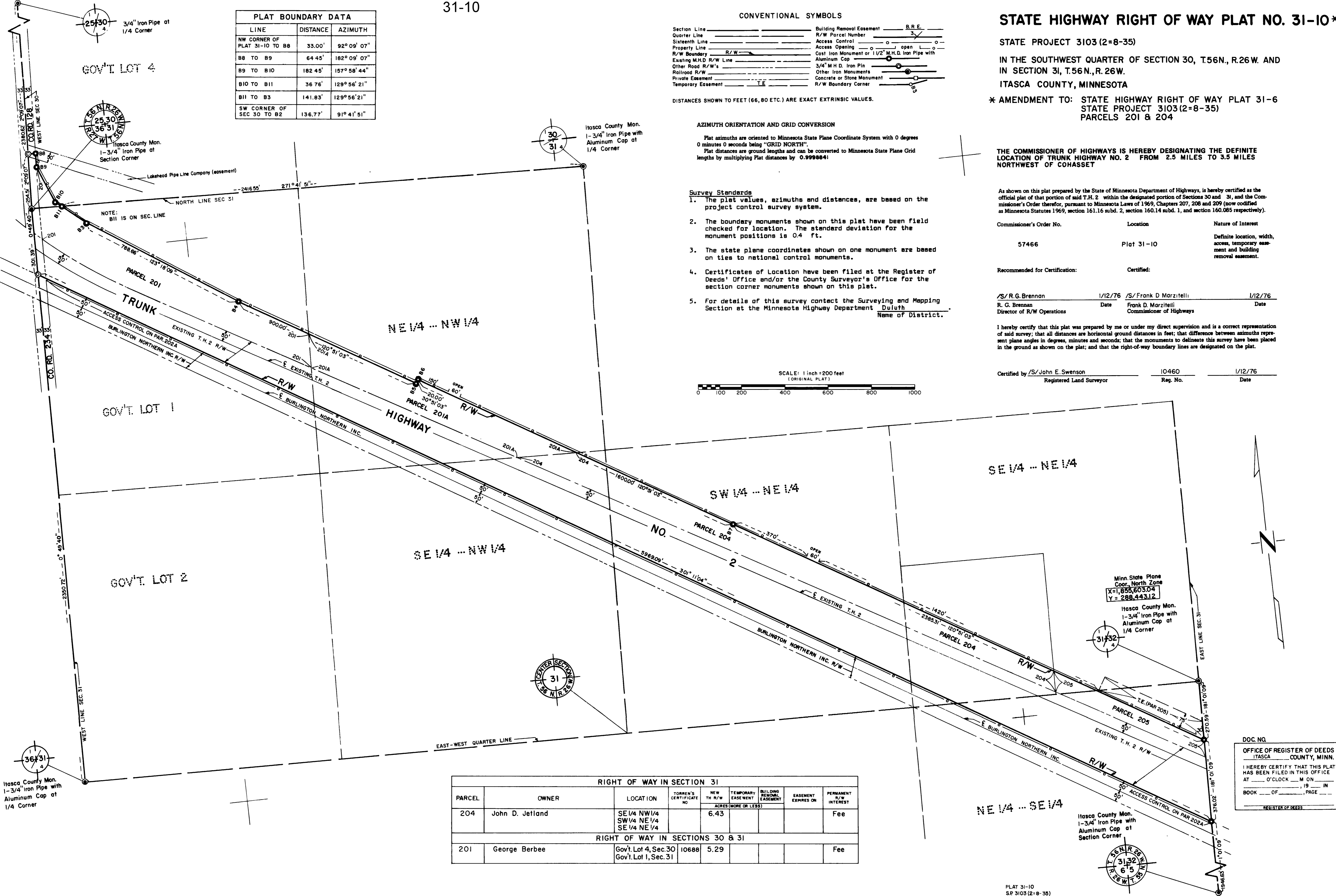
As shown on this plat prepared by the State of Minnesota Department of Highways, is hereby certified as the official plat of that portion of said T.H. 2 within the designated portion of Sections 30 and 31, and the Commissioner's Order therefor, pursuant to Minnesota Laws of 1969, Chapters 207, 208 and 209 (now codified as Minnesota Statutes 1969, section 161.16 subd. 2, section 160.14 subd. 1, and section 160.085 respectively).

Commissioner's Order No.	Location	Nature of Interest
57466	Plat 31-10	Definite location, width, access, temporary easement and building removal easement.

Recommended for Certification:	Certified:
/S/ R.G. Brennan R. G. Brennan Director of R/W Operations	1/12/76 Date /S/ Frank D. Marzitelli Frank D. Marzitelli Commissioner of Highways 1/12/76 Date

I hereby certify that this plat was prepared by me or under my direct supervision and is a correct representation of said survey; that all distances are horizontal ground distances in feet; that difference between azimuths represent plane angles in degrees, minutes and seconds; that the monuments to delineate this survey have been placed in the ground as shown on the plat; and that the right-of-way boundary lines are designated on the plat.

Certified by /S/ John E. Swenson Registered Land Surveyor	10460 Reg. No.	1/12/76 Date
--	-------------------	-----------------



RIGHT OF WAY IN SECTION 31								
PARCEL	OWNER	LOCATION	TORREN'S CERTIFICATE NO.	NEW TR R/W ACRES (MORE OR LESS)	TEMPORARY EASEMENT	BUILDING REMOVAL EASEMENT	EASEMENT EXPIRES ON	PERMANENT R/W INTEREST
204	John D. Jelfand	SE 1/4 NW 1/4 SW 1/4 NE 1/4 SE 1/4 NE 1/4		6.43				Fee
RIGHT OF WAY IN SECTIONS 30 & 31								
201	George Berbee	Gov't. Lot 4, Sec. 30 Gov't. Lot 1, Sec. 31	10688	5.29				Fee

DOC. NO.
OFFICE OF REGISTER OF DEEDS
ITASCA COUNTY, MINN.
I HEREBY CERTIFY THAT THIS PLAT HAS BEEN FILED IN THIS OFFICE AT ___ O'CLOCK ___ M ON ___ 19___ IN BOOK ___ OF ___ PAGE ___
REGISTER OF DEEDS