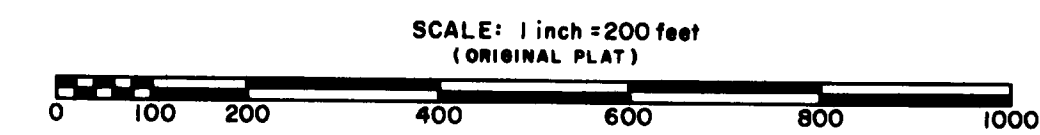


STATE HIGHWAY RIGHT OF WAY PLAT No. 31-7

STATE PROJECT 3103 (2-8-35)
IN THE SOUTH HALF OF SECTION 32, T.56N., R.26 W. AND IN
GOVERNMENT LOTS 1 & 2 OF SECTION 5, T.55N., R.26 W.
ITASCA COUNTY, MINNESOTA

AZIMUTH ORIENTATION AND GRID CONVERSION
Plat azimuths are oriented to Minnesota State Plane Coordinate System with 0 degrees 0 minutes 0 seconds being "GRID NORTH".
Plat distances are ground lengths and can be converted to Minnesota State Plane Grid lengths by multiplying Plat distances by 0.9998841



THE COMMISSIONER OF HIGHWAYS IS HEREBY DESIGNATING THE DEFINITE LOCATION OF TRUNK HIGHWAY NO. 2 FROM DEER RIVER TO CHASSET

As shown on this plat prepared by the State of Minnesota Department of Highways, is hereby certified as the official plat of that portion of said T.H. 2 within the designated portion of Sections 32 and 5, and the Commissioner's Order therefor, pursuant to Minnesota Laws of 1969, Chapters 207, 208 and 209 (now codified as Minnesota Statutes 1969, section 161.16 subd. 2, section 160.14 subd. 1, and section 160.085 respectively).

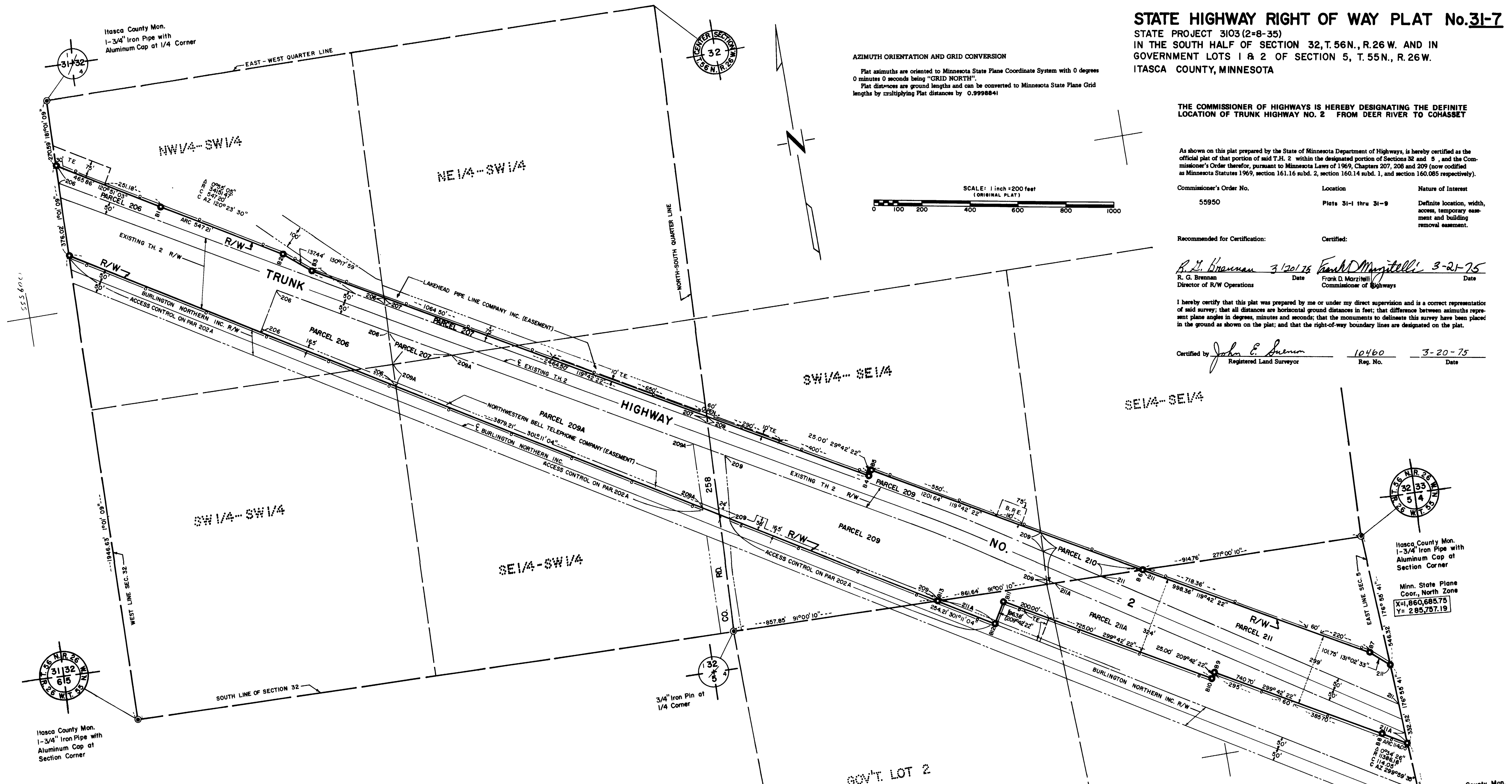
Commissioner's Order No.	Location	Nature of Interest
55950	Plats 31-1 thru 31-9	Definite location, width, access, temporary easement and building removal easement.

Recommended for Certification: Certified:

R. G. Brennan 3-20-75 *Frank D. Morzilli* 3-21-75
R. G. Brennan Date Frank D. Morzilli Date
Director of R/W Operations Commissioner of Highways

I hereby certify that this plat was prepared by me or under my direct supervision and is a correct representation of said survey; that all distances are horizontal ground distances in feet; that difference between azimuths represent plane angles in degrees, minutes and seconds; that the monuments to delineate this survey have been placed in the ground as shown on the plat; and that the right-of-way boundary lines are designated on the plat.

Certified by *John E. Jensen* 10460 3-20-75
Registered Land Surveyor Reg. No. Date



RIGHT OF WAY IN SECTION 32								
PARCEL	OWNER	LOCATION	TORREN'S CERTIFICATE NO.	NEW TR. R/W ACRES (MORE OR LESS)	TEMPORARY EASEMENT	BUILDING REMOVAL EASEMENT	EASEMENT EXPIRES ON	PERMANENT R/W INTEREST
206	State of Minnesota	NW 1/4 SW 1/4		4.01	0.39		12-1-80	Fee
207	Herbert Hansen	E 1/4 SW 1/4		1.34	0.20		12-1-80	Fee
209	Mabel Waala	SW 1/4 SE 1/4		8.55	0.08	0.19	2-27-78	Fee
209 A	Charles Osborn, Sr.	SE 1/4 SW 1/4		6.25				Fee
210	James Luther Wolfe	SE 1/4 SE 1/4		0.68				Fee
RIGHT OF WAY IN SECTION 5								
211	Mable Wolfe	Govt. Lot 1	7773	3.44				Fee
211 A	Agnes Chidester	Govt. Lots 1 & 2	11176	4.04	0.45		12-1-80	Fee
RIGHT OF WAY IN SECTIONS 5 & 32								
202A	Burlington Northern Inc.	Sections 5 & 32						Access Only

- Survey Standards**
- The plat values, azimuths and distances, are based on the project control survey system.
 - The boundary monuments shown on this plat have been field checked for location. The standard deviation for the monument positions is 0.2 ft.
 - The state plane coordinates shown on one monument are based on ties to national control monuments.
 - Certificates of Location have been filed at the Register of Deeds' Office and/or the County Surveyor's Office for the section corner monuments shown on this plat.
 - For details of this survey contact the Surveying and Mapping Section at the Minnesota Highway Department Duluth Name of District.

CONVENTIONAL SYMBOLS

Section Line	Building Removal Easement	B.R.E.
Quarter Line	R/W Parcel Number	3/4
Sixteenth Line	Access Control	o
Property Line	Access Opening	o
R/W Boundary	Cost Iron Monument or 1/2" M.H.D. Iron Pipe with Aluminum Cap	o
Existing M.H.D. R/W Line	3/4" M.H.D. Iron Pin	o
Other Road R/W's	Other Iron Monuments	o
Railroad R/W	Concrete or Stone Monument	o
Private Easement	R/W Boundary Corner	o
Temporary Easement		o

DOC NO. _____

OFFICE OF REGISTER OF DEEDS
ITASCA COUNTY, MINN.

I HEREBY CERTIFY THAT THIS PLAT HAS BEEN FILED IN THIS OFFICE AT _____ O'CLOCK _____ M. ON _____ DAY OF _____ 19____

BOOK OF _____ PAGE _____