

STATE HIGHWAY RIGHT OF WAY PLAT No. 31-11*

STATE PROJECT 3103 (2-8-35)
IN SECTION 4, T. 55 N., R. 26 W.
ITASCA COUNTY, MINNESOTA

* AMENDMENT TO: STATE HIGHWAY RIGHT OF WAY PLAT 31-8
STATE PROJECT 3103 (2-8-35)
PARCELS 212 & 213

RIGHT OF WAY IN SECTION 4							
PARCEL	OWNER	LOCATION	TORREN'S CERTIFICATE NO.	NEW TH. R/W	TEMPORARY EASEMENT	BUILDING REMOVAL EASEMENT	PERMANENT R/W INTEREST
212	Moku Corporation	SW 1/4 NW 1/4		0.61			Fee
213	State of Minnesota	Sec. 4		12.92	8.02		Fee

THE COMMISSIONER OF HIGHWAYS IS HEREBY DESIGNATING THE DEFINITE LOCATION OF TRUNK HIGHWAY NO. 2 FROM 0.5 MILE TO 1.5 MILES NORTHWEST OF COHASSET

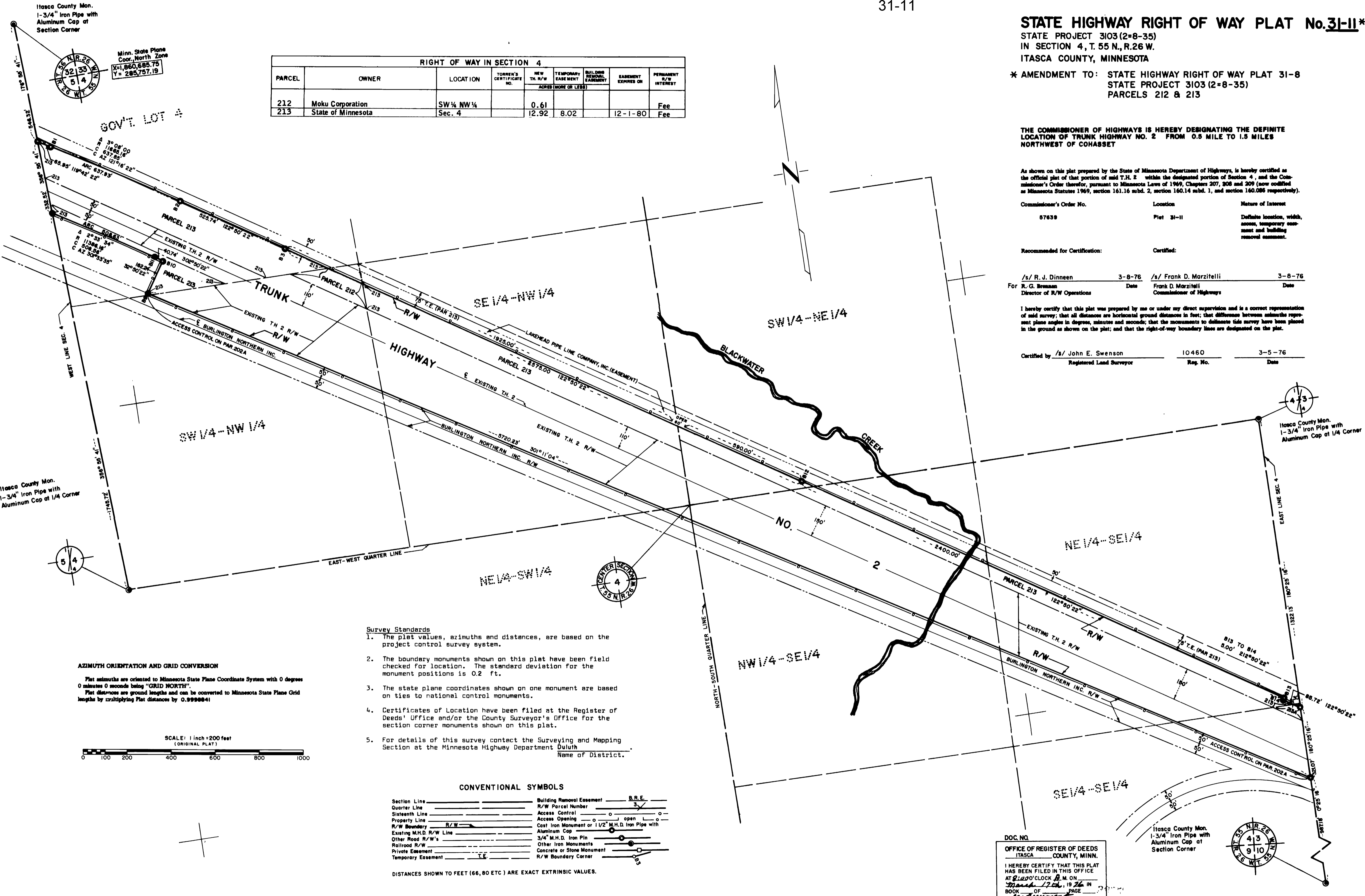
As shown on this plat prepared by the State of Minnesota Department of Highways, is hereby certified as the official plat of that portion of said T.H. 2 within the designated portion of Section 4, and the Commissioner's Order therefor, pursuant to Minnesota Laws of 1969, Chapters 207, 208 and 209 (now codified as Minnesota Statutes 1969, section 161.16 subd. 2, section 160.14 subd. 1, and section 160.086 respectively).

Commissioner's Order No.	Location	Nature of Interest
57639	Plat 31-11	Defines location, width, access, temporary easement and building removal easement.

Recommended for Certification:	Date	Certified:	Date
/s/ R. J. Dinneen Director of R/W Operations	3-8-76	/s/ Frank D. Marzitelli Commissioner of Highways	3-8-76

I hereby certify that this plat was prepared by me or under my direct supervision and is a correct representation of said survey; that all distances are horizontal ground distances in feet; that differences between adjacent segment plane angles in degrees, minutes and seconds; that the monuments to delineate this survey have been placed in the ground as shown on the plat; and that the right-of-way boundary lines are designated on the plat.

Certified by	Reg. No.	Date
/s/ John E. Swenson Registered Land Surveyor	10460	3-5-76



Itasca County Mon.
1-3/4" Iron Pipe with
Aluminum Cap at
Section Corner

Minn. State Plane
Coor., North Zone
X=1,860,685.75
Y=285,757.19

32 33
5 4
32 33
5 4
W.T. 35
N.R. 26

Itasca County Mon.
1-3/4" Iron Pipe with
Aluminum Cap at 1/4 Corner

4 3
5 4
W.T. 35
N.R. 26

- Survey Standards**
- The plat values, azimuths and distances, are based on the project control survey system.
 - The boundary monuments shown on this plat have been field checked for location. The standard deviation for the monument positions is 0.2 ft.
 - The state plane coordinates shown on one monument are based on ties to national control monuments.
 - Certificates of Location have been filed at the Register of Deeds' Office and/or the County Surveyor's Office for the section corner monuments shown on this plat.
 - For details of this survey contact the Surveying and Mapping Section at the Minnesota Highway Department, Duluth, Minnesota. Name of District.

AZIMUTH ORIENTATION AND GRID CONVERSION

Plat azimuths are oriented to Minnesota State Plane Coordinate System with 0 degrees 0 minutes 0 seconds being "GRID NORTH".
Plat distances are ground lengths and can be converted to Minnesota State Plane Grid lengths by multiplying Plat distances by 0.9998841

SCALE: 1 inch = 200 feet
(ORIGINAL PLAT)

0 100 200 400 600 800 1000

CONVENTIONAL SYMBOLS

Section Line	Building Removal Easement	B.R.E.
Quarter Line	R/W Parcel Number	3
Sixteenth Line	Access Control	o
Property Line	Access Opening	o open
R/W Boundary	Cast Iron Monument or 1/2" M.H.D. Iron Pipe with Aluminum Cap	o
Existing M.H.D. R/W Line	3/4" M.H.D. Iron Pin	o
Other Road R/W's	Other Iron Monuments	o
Railroad R/W	Concrete or Stone Monument	o
Private Easement	R/W Boundary Corner	o
Temporary Easement		o

DISTANCES SHOWN TO FEET (66, 80 ETC) ARE EXACT EXTRINSIC VALUES.

DOC. NO.

OFFICE OF REGISTER OF DEEDS
ITASCA COUNTY, MINN.

I HEREBY CERTIFY THAT THIS PLAT HAS BEEN FILED IN THIS OFFICE AT 2:00 O'CLOCK P.M. ON March 17th, 1976 IN BOOK OF PAGE in Assessment

REGISTER OF DEEDS

Itasca County Mon.
1-3/4" Iron Pipe with
Aluminum Cap at
Section Corner

4 3
5 4
W.T. 35
N.R. 26